

## CBS Roller Sizing Guide

Roller Type	Belt Width	Material	Rubber Type	Hardness	Number of Disc	Configuration	Bearing	A Face Length	B Slot Back to Back	C Overall Length	D Outside Diameter	E Shaft Diameter	F Slot Size	G Slot Width
Trough Roller (TR)	450	Steel / Polyethylene / Rubber Covered Steel	-	-	-	-	6204/6205	174	187	213	114/127	20/25	14	9
	600	Steel / Polyethylene / Rubber Covered Steel	-	-	-	-	6204/6205	226	239	265	114/127	20/25	14	9
	750	Steel / Polyethylene / Rubber Covered Steel	-	-	-	-	6204/6205	280	293	319	114/127	20/25	14	9
	900	Steel / Polyethylene / Rubber Covered Steel	-	-	-	-	6204/6205	333	346	372	114/127	20/25	14	9
	1000	Steel / Polyethylene / Rubber Covered Steel	-	-	-	-	6304/6305	360	373	399	114/127	20/25	14	9
	1050	Steel / Polyethylene / Rubber Covered Steel	-	-	-	-	6304/6305	385	398	424	114/127	20/25	14	9
	1200	Steel / Polyethylene / Rubber Covered Steel	-	-	-	-	6304/6305	438	451	477	114/127	20/25	14	9
	1500	Steel / Polyethylene / Rubber Covered Steel	-	-	-	-	6304/6305	543	556	582	114/127	20/25	14	9
Return Roller (RR)	450	Steel / Polyethylene / Rubber Covered Steel	-	-	-	-	6204/6205	541	561	587	114/127	20/25	14	9
	600	Steel / Polyethylene / Rubber Covered Steel	-	-	-	-	6204/6205	696	716	742	114/127	20/25	14	9
	750	Steel / Polyethylene / Rubber Covered Steel	-	-	-	-	6204/6205	846	866	892	114/127	20/25	14	9
	900	Steel / Polyethylene / Rubber Covered Steel	-	-	-	-	6204/6205	996	1016	1042	114/127	20/25	14	9
	1000	Steel / Polyethylene / Rubber Covered Steel	-	-	-	-	6304/6305	1096	1126	1152	114/127	20/25	14	9
	1050	Steel / Polyethylene / Rubber Covered Steel	-	-	-	-	6304/6305	1146	1176	1202	114/127	20/25	14	9
	1200	Steel / Polyethylene / Rubber Covered Steel	-	-	-	-	6304/6305	1296	1326	1352	114/127	20/25	14	9
	1500	Steel / Polyethylene / Rubber Covered Steel	-	-	-	-	6304/6305	1646	1676	1702	114/127	20/25	14	9
Impact Roller (IR)	450	Rubber Disc & Steel	M Grade	60 Duro	4	-	6205	174	187	213	133	25	14	9
	600	Rubber Disc & Steel	M Grade	60 Duro	6	-	6205	226	239	265	133	25	14	9
	750	Rubber Disc & Steel	M Grade	60 Duro	8	-	6205	280	293	319	133	25	14	9
	900	Rubber Disc & Steel	M Grade	60 Duro	9	-	6205	333	346	372	133	25	14	9
	1000	Rubber Disc & Steel	M Grade	60 Duro	10	-	6305	362	375	401	133	25	14	9
	1050	Rubber Disc & Steel	M Grade	60 Duro	11	-	6305	387	400	426	133	25	14	9
	1200	Rubber Disc & Steel	M Grade	60 Duro	12	-	6305	440	453	479	133	25	14	9
	1500	Rubber Disc & Steel	M Grade	60 Duro	15	-	6305	545	558	584	133	25	14	9
Rubber Disc Return Roller (RDRR)	450	Rubber Disc & Steel	M Grade	60 Duro	8	3+1+1+3	6205	541	561	587	133	25	14	9
	600	Rubber Disc & Steel	M Grade	60 Duro	9	3+1+1+1+3	6205	696	716	742	133	25	14	9
	750	Rubber Disc & Steel	M Grade	60 Duro	9	3+1+1+1+3	6205	846	866	892	133	25	14	9
	900	Rubber Disc & Steel	M Grade	60 Duro	10	3+1+1+1+1+3	6205	996	1016	1042	133	25	14	9
	1000	Rubber Disc & Steel	M Grade	60 Duro	11	3+1+1+1+1+1+3	6305	1096	1126	1152	133	25	14	9
	1050	Rubber Disc & Steel	M Grade	60 Duro	12	4+1+1+1+1+4	6305	1146	1176	1202	133	25	14	9
	1200	Rubber Disc & Steel	M Grade	60 Duro	13	4+1+1+1+1+1+4	6305	1296	1326	1352	133	25	14	9
	1500	Rubber Disc & Steel	M Grade	60 Duro	15	4+1+1+1+1+1+1+1+4	6305	1646	1676	1702	133	25	14	9

**Note:** Nonstandard Rollers available upon customer's request.

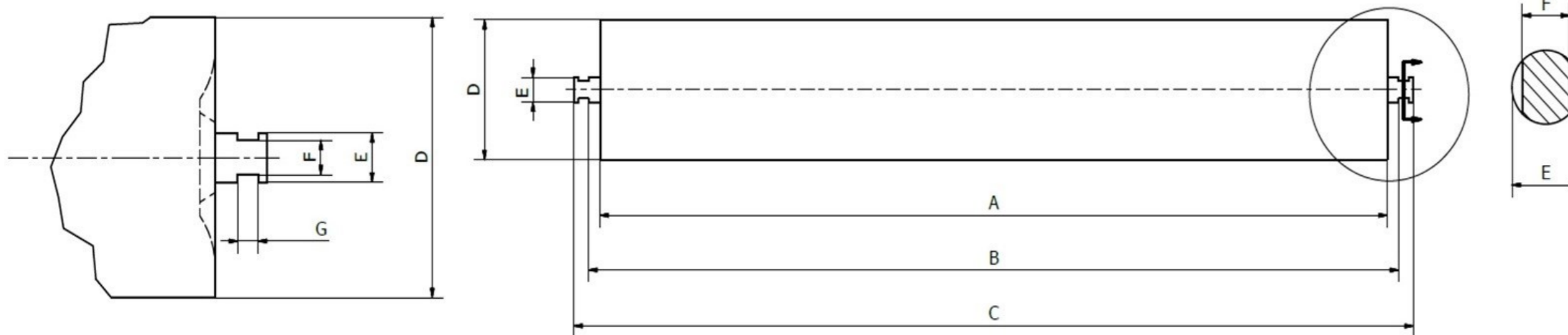
**Note:** For TR and RR, Outside Diameter 114/127 fits Shaft Diameter 20/25, Bearing 6204/6205.

**Note:** For all rollers which apply belt width over 900, the bearing is 630\*, otherwise 620\*.

**Note:** Rubber Disc Length for IR is 35mm, for RDRR is 40mm.

© Complete Belting Solutions Pty Ltd 2015 All Rights Reserved

Copyright of all published material on this document remains vested in Complete Belting Solutions Pty Ltd. Neither the whole nor any part of this document shall be reproduced in any form nor used in any manner without express prior permission and applicable acknowledgements. No trademark, copyright or other notice shall be altered or removed from any authorised reproduction.



**Product, Purchasing & Delivery Enquiries**

For more information on these or other products in the Complete Belting Solutions Pty Ltd range, please contact us.

**Head Office - Melbourne**

28 Australis Drive, Derrimut, VIC, Australia, 3030

T (03) 8375 1910

E sales@completebelting.com.au

[www.completebelting.com.au](http://www.completebelting.com.au)